



TERSA- BARCELONA

SCR DENOX, WASTE-TO-ENERGY PLANT
BARCELONA, (SP)

Key information:

- Installation: Existing Plant
- Capacity: 3 x 15 t/h
- Upstream Equipment: Combustion Grate, Boiler, dry FGT
- Downstream Equipment: ID fan, stack
- FGC process: CataLAB™
- Commissioning: 2020

TECHNICAL HIGHLIGHTS

- TAIL-END SCR FOR NOX & DIOXINS REMOVAL
- VERY LOW NOX EMISSIONS & AMMONIA SLIP
- LONG LIFETIME OF CATALYSTS
- HEAT RECOVERY BY FINAL ECONOMISER



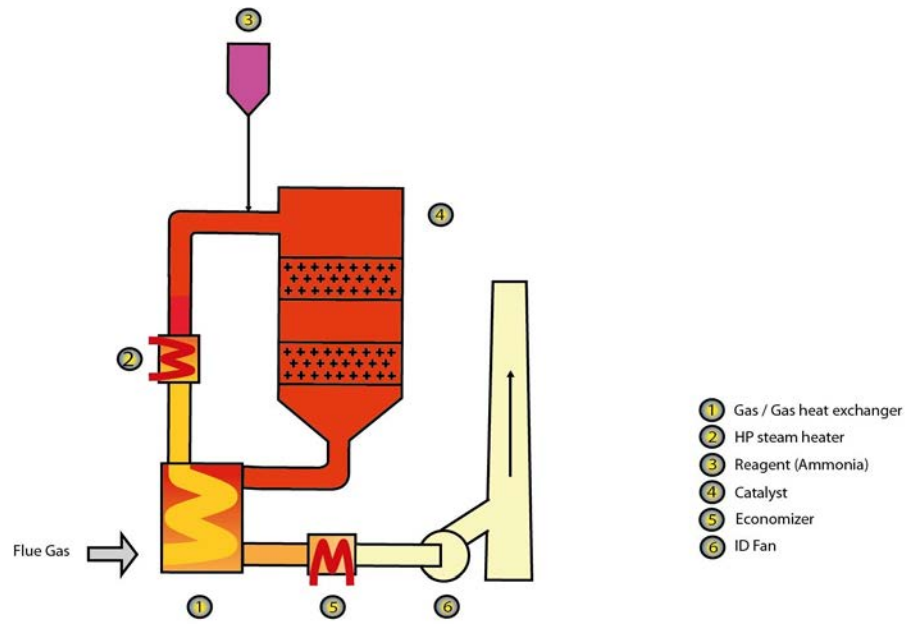
CNIM

TERSA

TAIL-END SCR

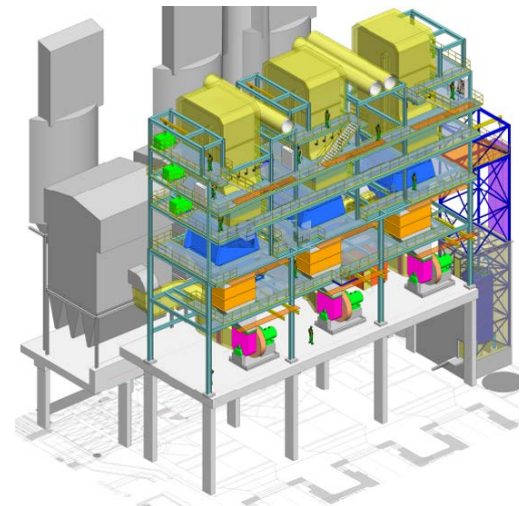
The installed process is a well-advanced and efficient tail-End SCR unit consisting in Gas/Gas Heat Exchanger, HP steam heater SCR casing with catalysts and ammonia injection, ID Fan, replacing of bag filters and all auxiliaries, allowing low flue gas emissions (NO_x and Ammonia slip).

This project is performed with our partner IMASA INGENIERIA y PROYECTOS.



| | | |
|---------------------------------------|-----------------------------------|------------------|
| Volume flow | 3 x 95'000 Nm ³ /h wet | |
| Inlet Temperature | 150°C | |
| Pollutants (mg/Nm³) | Before FGT | After FGT |
| NO _x | 300 | <50 |
| NH ₃ | | 2 |

The project is the strong ambition of Barcelona Metropolitan to reduce the level of air pollution and improve air quality for Barcelona inhabitants.



LinkedIn

To learn more about us visit our website
www.lab.fr

This WtE plant has been built 40 years ago and can treat 360 000 tons of waste per year.

Lab

ENIM